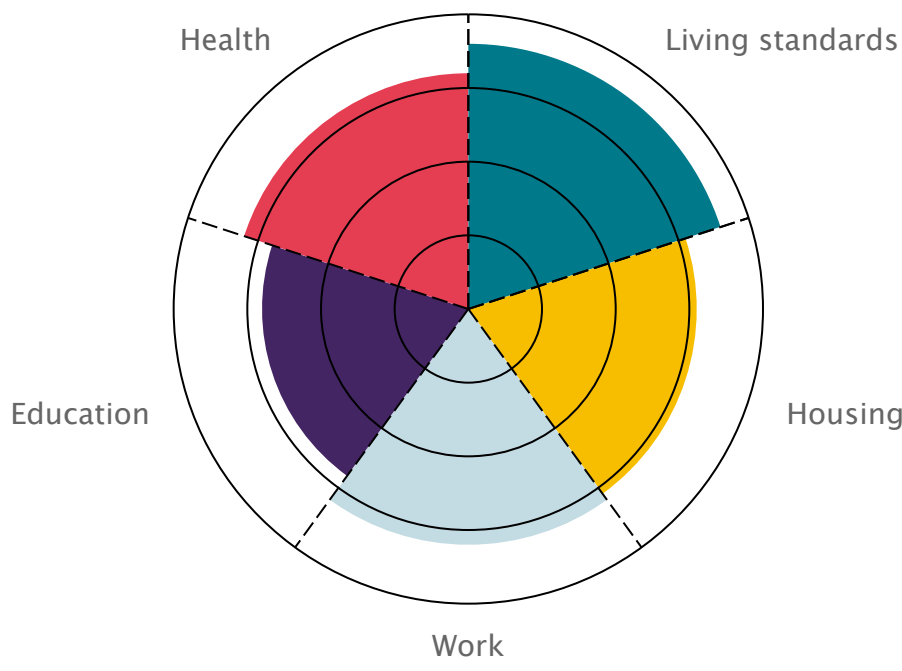


London's Poverty Profile provides evidence on and insight into poverty and inequality in London. It shines a light on these issues to prompt action from local and national government, the third sector, faith groups, practitioners, experts, businesses, the public and indeed anyone who cares about making London a fairer city to live in.

This factsheet draws together insights specifically for Richmond upon Thames from the wider set of indicators published in London's Poverty Profile.

For details of the data sources and methods used please see <https://trustforlondon.org.uk/data/boroughs/overview-of-london-boroughs/>

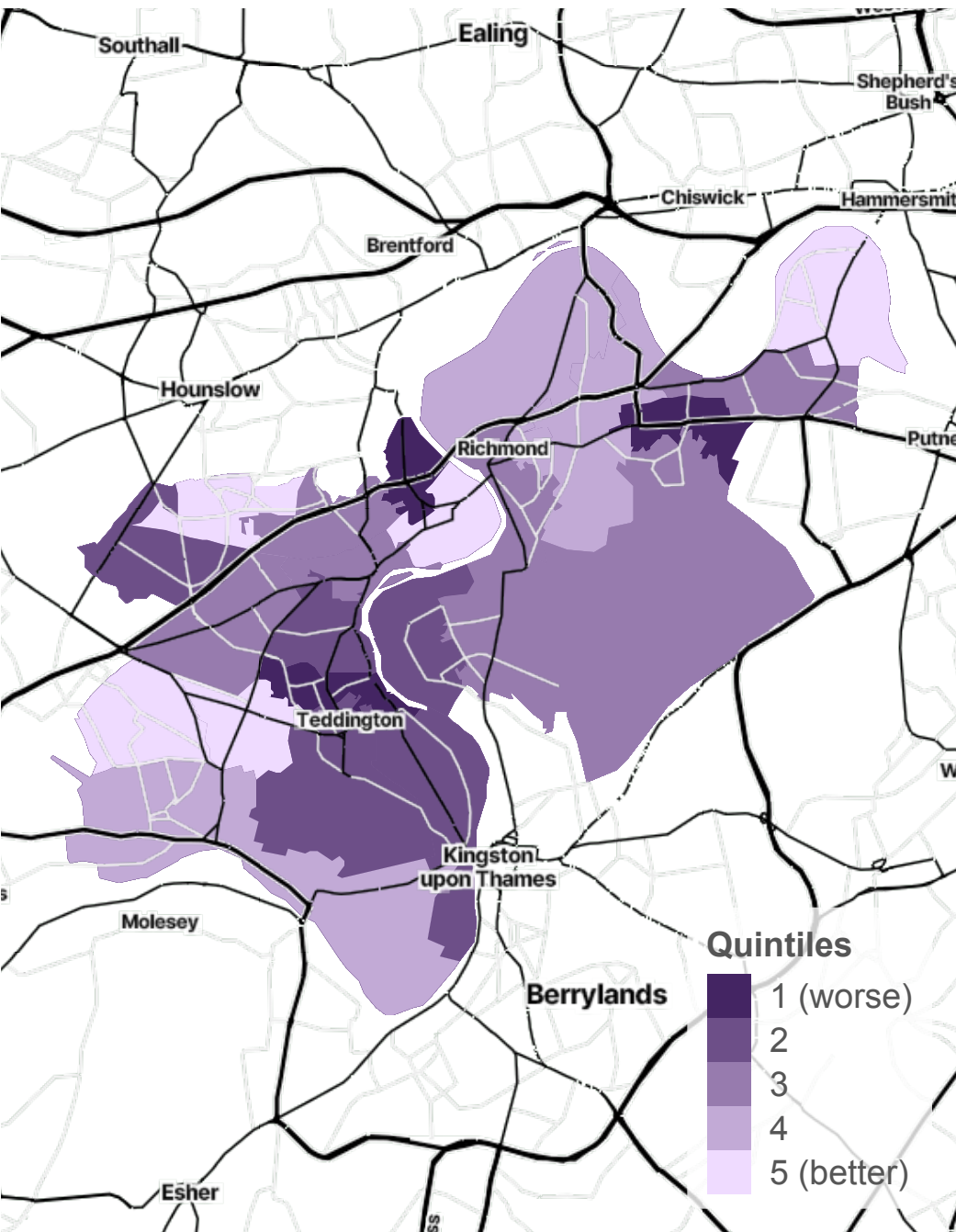


The chart above summarises the boroughs' indicators across each of our themes. The center represents worse performance, outer rings better

Key Points

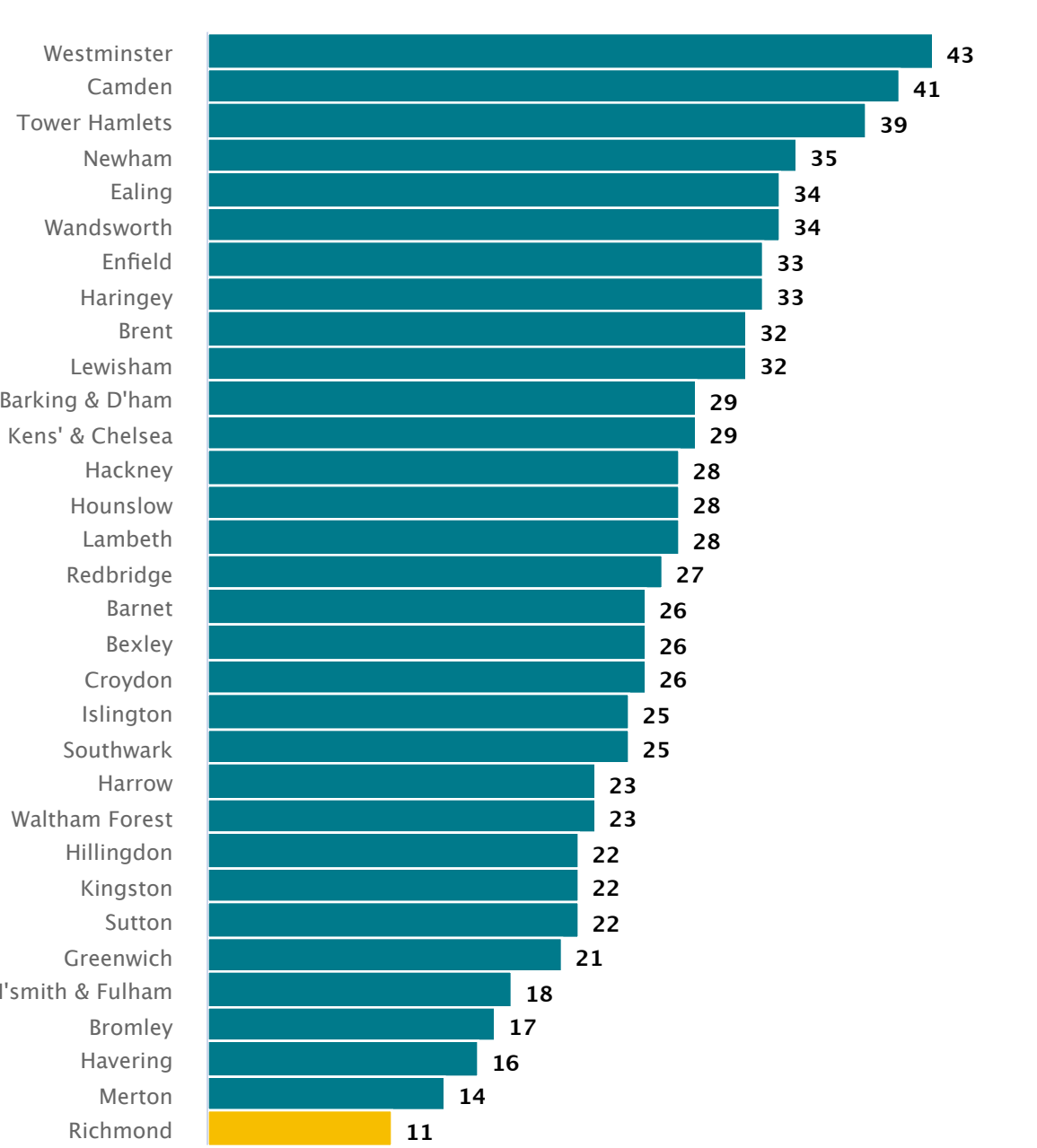
- In 2021/22, 11% of people in the borough lived in households with an income of less than 60% the UK median after housing costs have been subtracted. This was better than the average London Borough.
- 12% of children in the borough lived in households with an income of less than 60% the UK median after housing costs have been subtracted in 2021/22. This was better than the average London Borough.
- In Richmond upon Thames, 11.5% of residents were estimated to be earning below the Living Wage in 2023. This was better than the average London Borough.
- Premature death rates per 100,000 in Richmond upon Thames were better than the average London Borough at 206 in 2021
- Unemployment change in 2023 Q3 at 0.5 percentage points from 3 years ago was around the same as the average London Borough.
- Affordable, social and other discounted housing completions were around the same as in Richmond upon Thames the average London Borough, with 50 delivered in 2016/17 - 2018/19.

Income estimates 2018



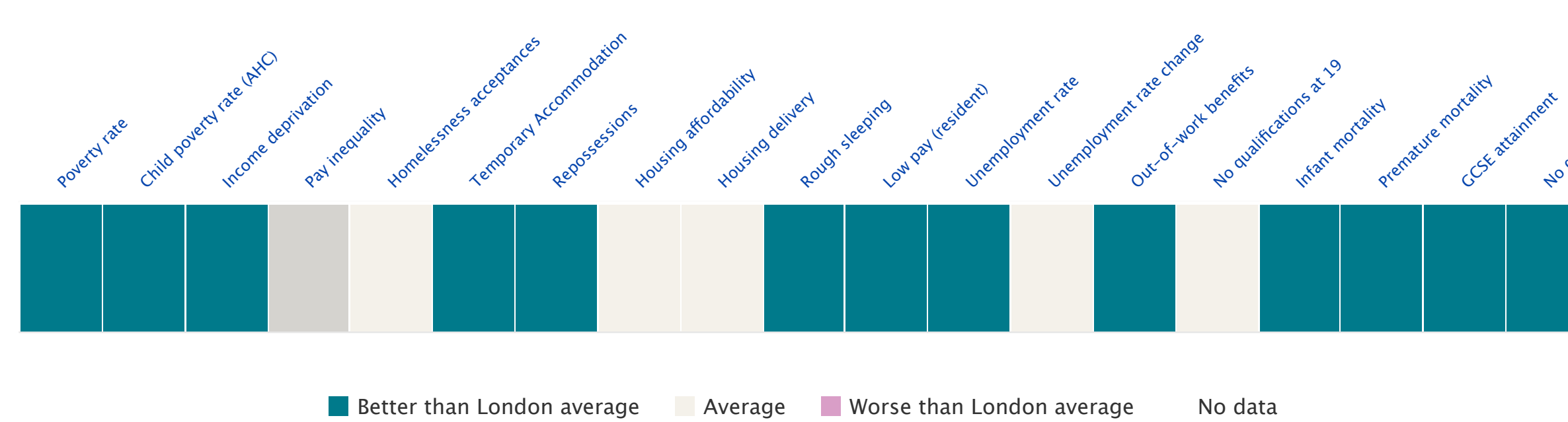
Source: MSOA Income estimates 2018, ONS

Poverty rate 2019/2020



Source: Households below average income 5 year averages to 2019/2020, DWP

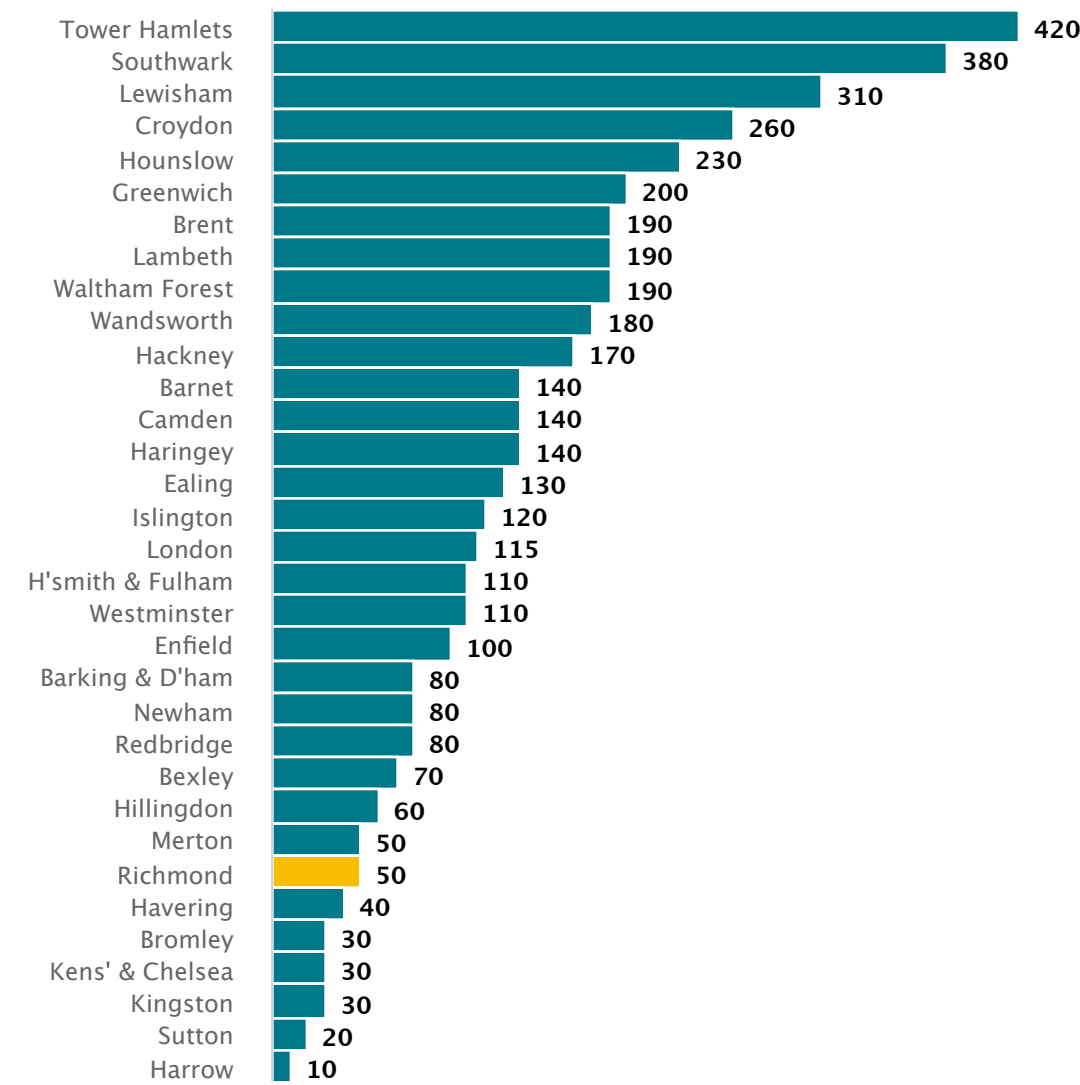
Richmond upon Thames ratings across key indicators



Looking across all the indicators collected at Borough level for the London Poverty Profile, Richmond upon Thames did worst for Average annual net completions of affordable and market housing units by London borough, and best for Proportion of children in poverty before and after housing costs by London borough.

Worse for:

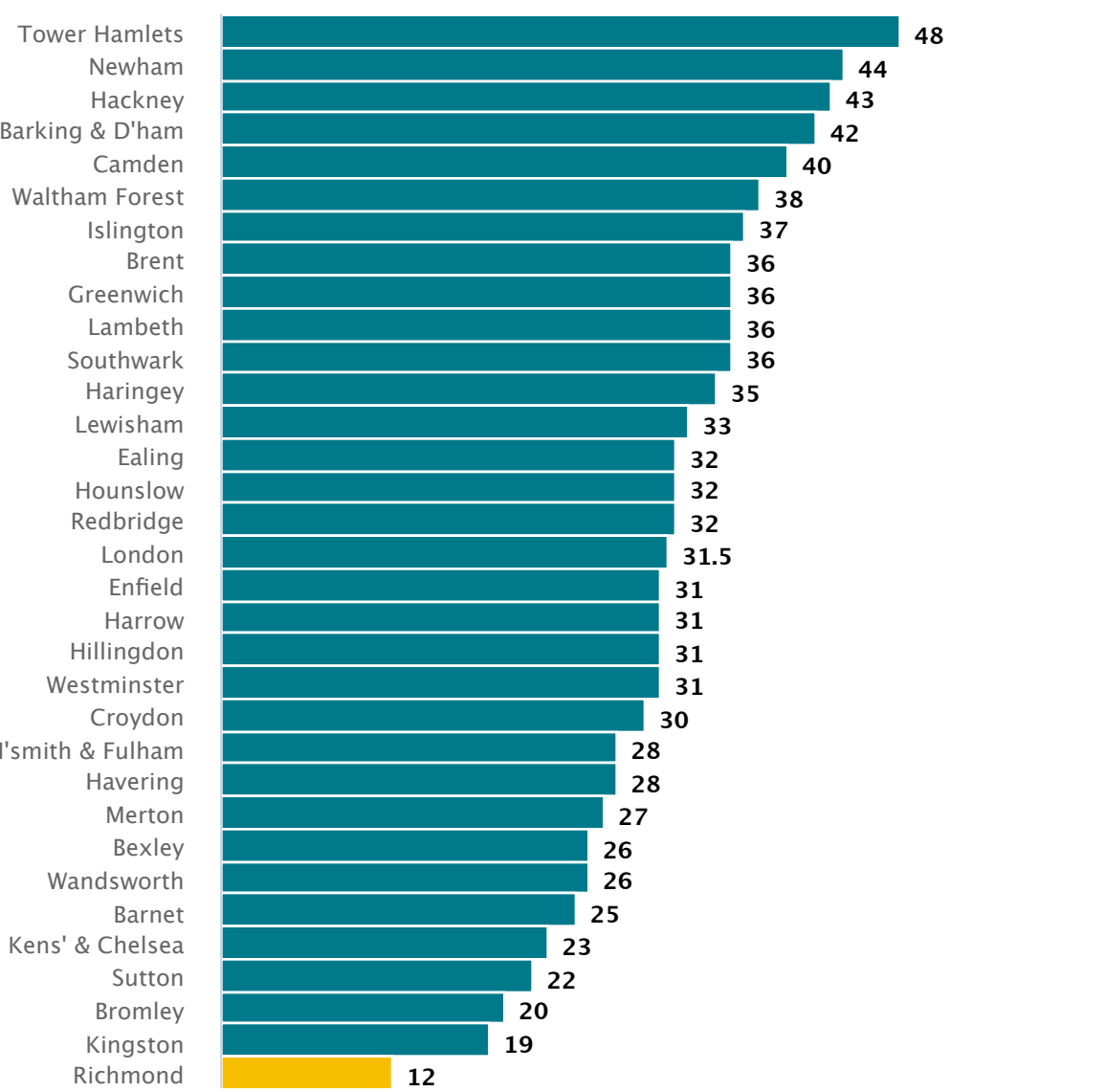
Average net affordable, social and discounted housing completions
2016/17 - 2018/19



Source: The London Plan Annual Monitoring Report, GLA via London Datastore

Better for:

Child poverty rate (AHC)
2021/22



Source: Local indicators of child poverty, Centre for Research in Social Policy, Loughborough University for End Child Poverty; Children in low income families: local area statistics, DWP